

CHELSEA INDEPENDENT COLLEGE

PROSPECTUS



CHELSEA INDEPENDENT COLLEGE

517 - 523 Fulham Road London SW6 1HD

Tel: +44 (0)20 7610 1114
Fax: +44 (0)20 7610 3404
Email: admissions@cic.ac
Web: www.cic.ac



Welcome to Chelsea College

Chelsea Independent College aims to provide an environment and ethos in which young people discover and develop their varied skills and talents, whilst also deriving from their daily challenges a sense of purpose, self-discipline, and consideration for others.

PROSPECTUS CONTENTS	PAGE
WELCOME TO CHELSEA COLLEGE	1 - 2
OUR COURSES	3 - 4
2 YEAR A LEVEL COURSES	5 - 6
1 YEAR A LEVEL COURSES	7 - 8
GCSE COURSES	9 - 10
OUR PERSONAL ATTENTION	11 - 12
AFTER CHELSEA COLLEGE	13 - 14
EXTRA CURRICULAR ACTIVITIES	15 - 16
ADMISSIONS	17 - 18



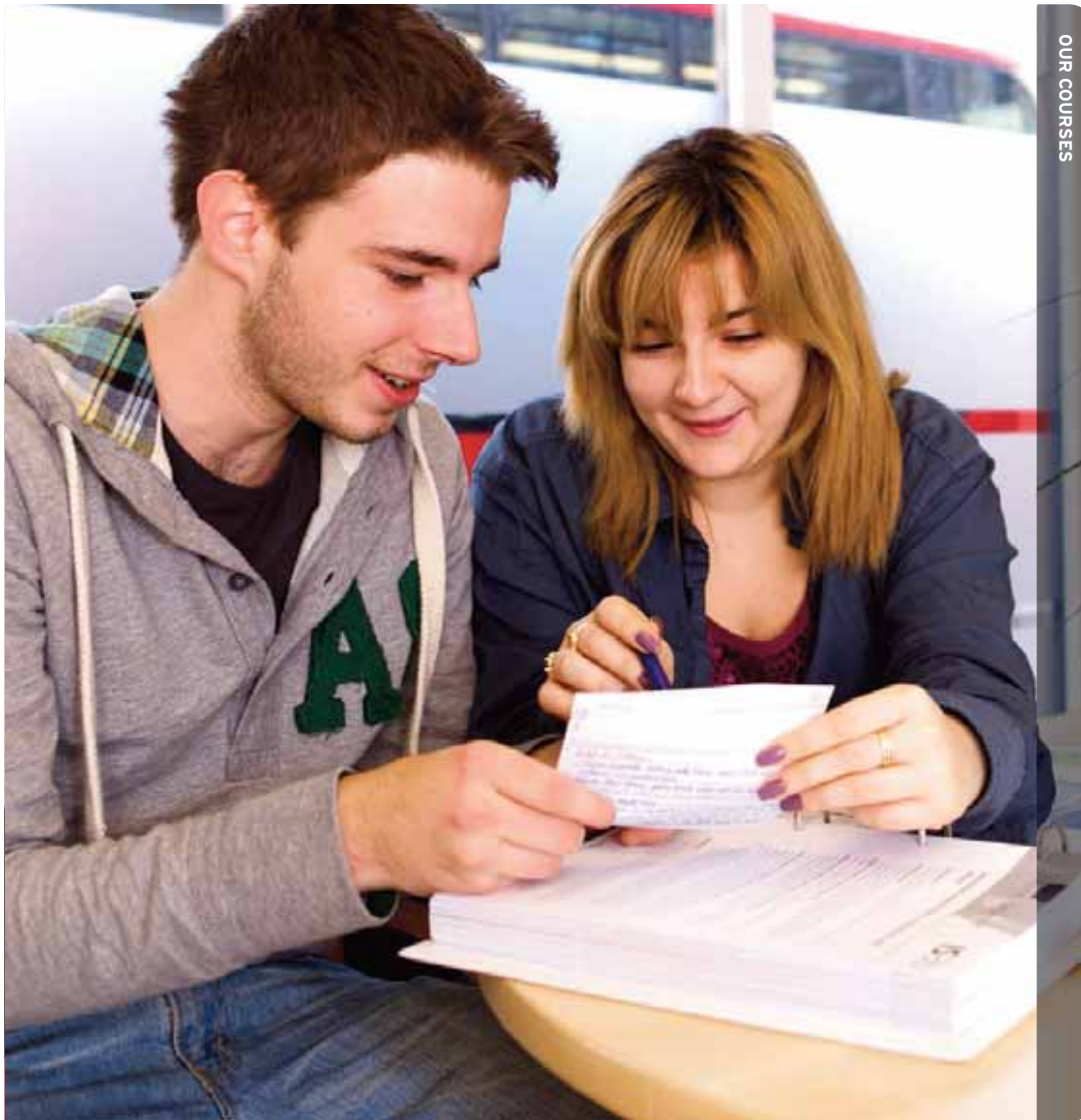
Chelsea Independent College is a vibrant sixth form college based in the heart of London's fashionable Chelsea.

The College strives to stimulate independent enquiry and intellectual curiosity and to foster a secure sense of individuality. This is achieved within a framework of sensible discipline based on sound moral values.

The relationship between staff and students is more relaxed than it might be at a traditional school and it is based on mutual trust and respect.

Chelsea College benefits from modern, well resourced buildings and a position within easy reach of many of London's attractions.





OUR COURSES

A unique feature of the college is the scope of A-level combinations we offer, nearly forty different courses are available. This means that we are able to cater for students wishing to approach all areas of study at university.

From Medicine and Dentistry to Classics or Law, we are always able to tailor an appropriate structure for individuals.



In a world where qualifications are of ever increasing importance, the central concern of the College is to present each student with ambitious personal goals whilst ensuring that these are also realistic and attainable.

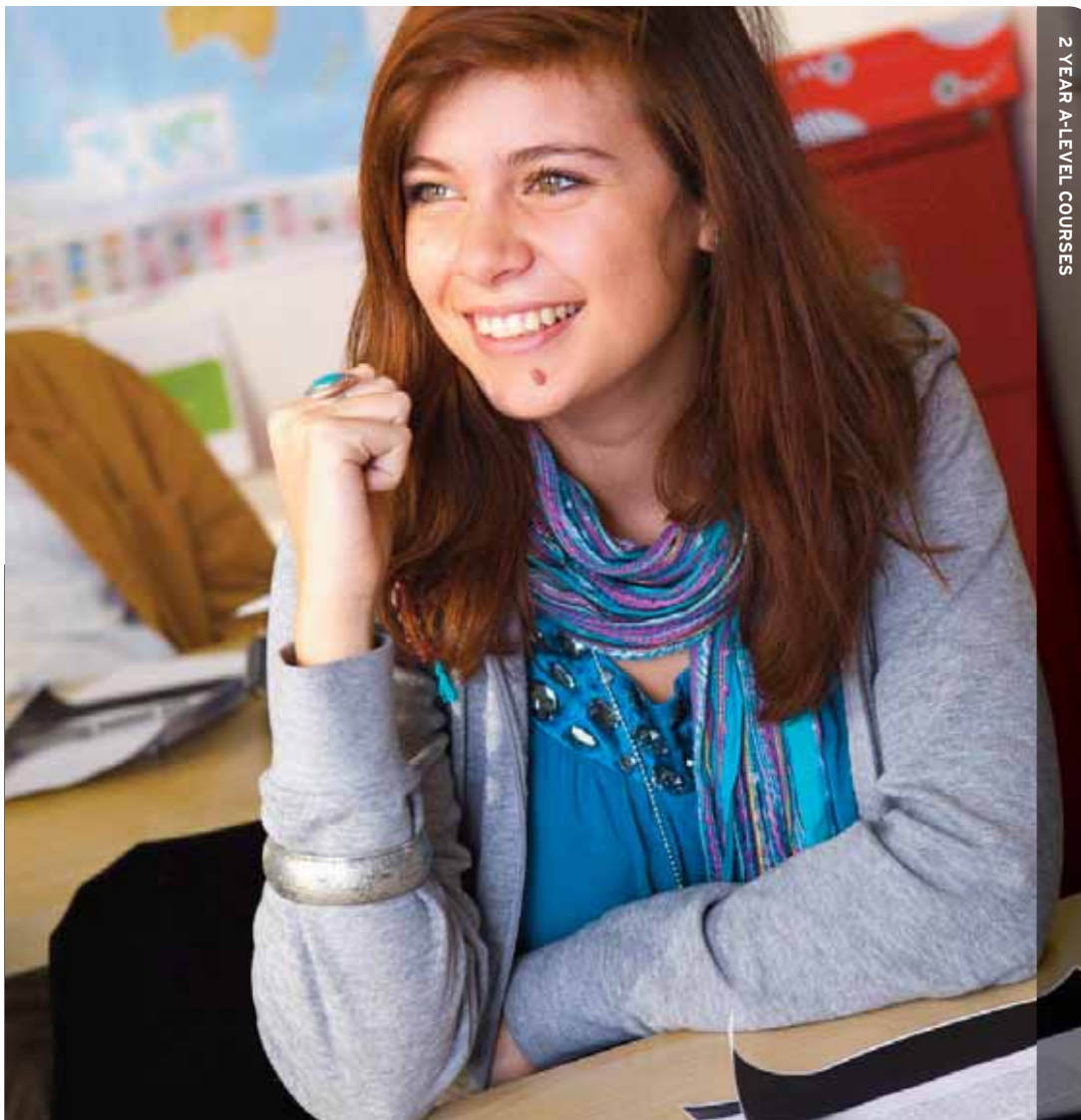
“Students of all ages unanimously say that they are pleased to be at the college.”

OFSTED

The majority of students at Chelsea are studying A levels on a traditional two year course. In the first year, students generally take four AS levels and continue with three of these subjects in the second year. It can be difficult to know which subjects to choose and so we are here to give expert advice on subject combinations. We have a wealth of knowledge about the university entrance system which means we can really help target the subject choices correctly at interview.

The college is however a flexible environment and we do give freedom of movement between subjects and disciplines where required. If we are not able to determine an exact programme of study at the start of a student's course it may be possible to sit in on a number of subjects for a short period





2 YEAR A-LEVEL

Our extensive combination of A-levels provides a solid base for entry to all university disciplines, from medicine to fashion design. We always believe in bringing subjects alive outside of the classroom and have a wide range of guest speakers across all disciplines.

ACCOUNTS

ART AND DESIGN

BIOLOGY

BUSINESS STUDIES

CHEMISTRY

CHINESE

CLASSICAL CIVILISATION

COMPUTING

ECONOMICS

ENGLISH LANGUAGE

ENGLISH LITERATURE

FILM STUDIES

FRENCH

FURTHER MATHEMATICS

GERMAN

GEOGRAPHY

GOVERNMENT AND POLITICS

HISTORY

ICT

ITALIAN

LATIN

LAW

MATHEMATICS

MEDIA STUDIES

MUSIC

PHILOSOPHY

PHYSICS

PSYCHOLOGY

RELIGIOUS STUDIES

RUSSIAN

SOCIOLOGY

SPANISH

SPORTS STUDIES

THEATRE STUDIES

One of the unique features of Chelsea is the wide range of A-levels offered and the vast range of subject combinations available. Whilst many students have very specific targets at university others wish to keep their university choices more open.

“Student feedback was very positive and there was a high level of satisfaction with the teaching staff.”

BAC

We can provide expert advice on the most suitable combination of subjects at interview and during your course of study. The whole A-level programme integrates high quality teaching and very regular testing and homework, which is integral to examination success. Whilst grades always remain the key focus, we never forget the importance of gaining a breadth of knowledge across all subject areas.

Tutors help to bring subjects alive with an extensive range of external visits and a comprehensive series of visiting speakers open to all. We always recognise the importance of informed and passionate debate in the learning process and are keen to develop these skills in all of our students.





1 YEAR A-LEVEL

One year A-levels provide a perfect base for those with some previous A-level experience or those joining courses from other educational systems.

These are intensive and demanding courses but many highly successful students have progressed through this route to many top British universities and medical schools.



Nearly all subjects offered by Chelsea can be studied over a single one year period. These courses are completely separate from the traditional two year courses we offer and have an even more intensive examination focus.

"I think Chelsea College is a wonderful college... The teachers are great, and always show their unwavering support. I also like the fact that classes are small, as it is easier to grasp what is being taught."

ANNE, EX STUDENT

Many students following these courses are targeting medical schools or high demand universities and so our target-setting on these courses is always demanding.

These courses will also suit those students who may have completed A-levels but need to make slight improvements to their grades. Each year we also welcome a number of students who are looking to enter the medical sciences as mature

candidates, an area the college has great expertise in. We also provide extensive counselling and advice on the new entry examinations such as UKCAT, BMAT and LNAT. Internal preparation courses coupled with interview practice and a programme of work experience where applicable, ensure the strongest university application.





GCSE COURSES

Students who are under 16 at the start of the school year are obliged to remain at school even when they have no lessons, unlike the relative freedom given to A-Level students.

This means that any free periods are taken up with study sessions in the internet room. In these sessions, students are expected to complete homework assignments and undertake revision for their fortnightly tests.

ART

BIOLOGY

BUSINESS STUDIES

CHEMISTRY

COMBINED SCIENCE

DRAMA

ENGLISH

ENGLISH LITERATURE

FRENCH

GEOGRAPHY

GERMAN

HISTORY

ICT

MATHEMATICS

PHYSICS

PHYSICAL EDUCATION

RELIGIOUS STUDIES

SPANISH

All GCSE students undertake a sporting activity, benefitting hugely from our close proximity to the open spaces of Chelsea. The college caters for a small number of GCSE students who thrive in the very caring and personable environment which our size allows for.

“Behaviour is outstanding and students develop a clear understanding of right and wrong through their learning experiences.”

BAC

Courses are offered on the traditional two year basis from Year 10, but many students also transfer to us having completed Year 10 at another school.

For these students we recommend an intensive one year course which is self contained so that there is a chance to review Year 10 work as well as moving to complete the remainder of the specification.

All students who are of compulsory school age will study Mathematics, English, Combined Science and one humanities subject. They may choose the remaining subjects from a wide range. For science students, there is the option after the first term to transfer to studying sciences as single subjects, rather than as Combined Science.





PERSONAL ATTENTION

An average group of six means bespoke teaching for all students. We deal with academic problems as they arise in the classroom, rather than being left to develop. All students are assigned a personal tutor selected for their ability to relate to young people, and trained in student welfare.



The Personal Tutor has an overview of progress and meets with the student a minimum of twice a term for a review of work. The small size of the college also means that the Senior Management Team is able to monitor student progress effectively.

“The college is commended both for the close monitoring of student progress and for the level of support given to those who would benefit from additional help.”

BAC

We believe that personal attention is the hallmark of a successful college. With this in mind, we have an average class size of seven and we allocate a Personal Tutor to every student.

The role of the Personal Tutor is a vital one which acts as a conduit between student and teacher as well as between teacher and parent.

They are always available for both formal and informal dialogue in relation to all aspects of a student's studies. This varies from a formal review of homework and mock examination marks to a simple shoulder to lean on when required.





GETTING RESULTS

Students are expected to make academic study their priority and to set their sights high in all that they do. With this attitude virtually all Chelsea students aim to study at a top university.

We are on hand to give advice every step of the way regarding the applications process and will help to guide parents through the process as well.



The main aim of almost all of our students is to proceed to further study at Russell Group universities.

They receive expert advice from a group of senior staff in order to help them make appropriate choices.

“Students say that they value the very regular feedback and guidance that they receive from their teachers through regular opportunities for formal and informal dialogue.”

OFSTED REPORT

We never lose sight of the very specific examination needs of each subject. Examination testing is therefore an integral part of a student's success.

Regular practice is a feature of which we are very proud and in which we strongly believe. Students are tested once a fortnight in each subject, covering the previous fortnight's work. We find that this helps to build their confidence

and motivation. Results are monitored by the Senior Management Team who meet to discuss student progress and intervention strategies where students are not performing at their best.

Concerns at this stage are reported to parents so that constructive conversations can take place between us all.





EXTRA CURRICULAR ACTIVITIES

The college offers a wide range of sporting activities with football forming the core of the college's team activities. Over the years however students have engaged in a wide range of sports from basketball and tennis to badminton and swimming.

TRIPS TO PARIS AND BARCELONA
FIRST AID COURSES
FOOTBALL CLUB
BADMINTON
SWIMMING
LIFE SAVING
VISITS TO THE OLD BAILEY

VISITS TO THE TATE MODERN
YOUNG ENTERPRISE SCHEME
SKIING TRIP
DEBATING SOCIETY
CHESS CLUB
STUDENT COUNCIL
DUKE OF EDINBURGH

The college's programme of extra-curricular activities provides a focal point for students outside of the academic life of the college. We encourage all students to develop their varied skills outside the classroom through sporting and other activities varying from gallery visits to First Aid courses.

A range of excursions and overseas trips also provides a breadth to every student's experience at the college.

Recent trips have included visits to Paris, Barcelona and Madrid and the college always welcomes ideas from individual students or groups wishing to enhance this aspect of college life further.

Many students also become active members of the college Student Representative Council, where they have an opportunity to have a positive impact on the College.

We also encourage students to partake in a wide range of schemes, from the Duke of Edinburgh Award to the popular Young Enterprise scheme.

We believe a student's academic development is central to their time in the college. Gaining a breadth of "life skills" is also key when thinking of university entrance and the demands of employers in later life.



Admissions

If you are interested in joining the college, please contact our Admissions Officer on 020 7610 1114 who will be happy to discuss your requirements and arrange for you to meet the Principal. At that meeting, you will have the opportunity to discuss your options in depth and to have a look around the college.

1. After interview and on receipt of a suitably completed application to the college the Principal will, at the college's discretion, make an offer of a place for a student to study.
2. If a student accepts the offer they will need to send Chelsea Independent College a fully completed application form along with a registration fee in order to secure their place.
3. The registration fee is non-refundable.
4. A Confirmation of Acceptance letter will be sent out to the student on receipt of payment.
5. Further correspondence regarding registration and payment of school fees will be sent prior to the start of term.
6. Full terms and conditions are available on request or can be found on our website www.cic.ac

GETTING TO CHELSEA

PARKING

Underground car park below Fulham Broadway Station and Shopping Centre

NEAREST TUBE STATION

Fulham Broadway on the District Line

NEAREST TRAIN STATION

West Brompton

